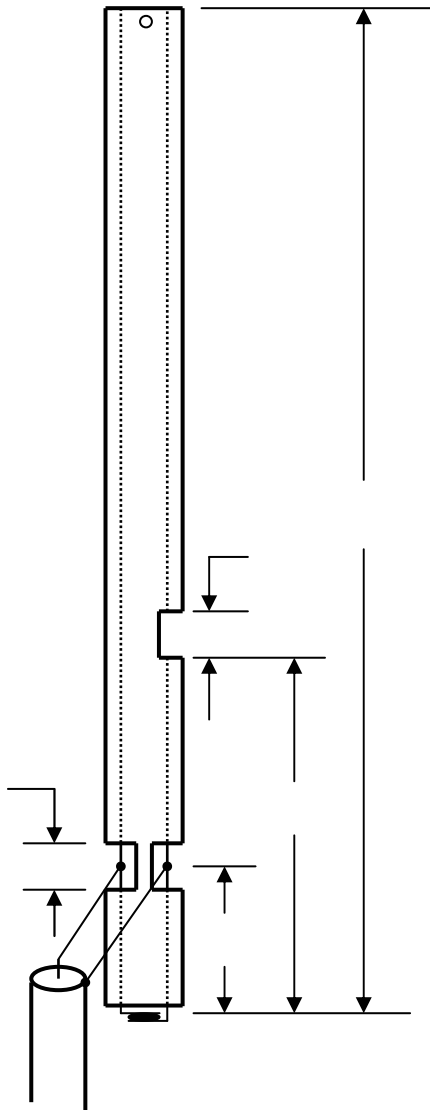


EXPEDIENT VHF J-POLE ANTENNA CONSTRUCTED FROM 300-OHM TWIN-LEAD

Here is a simple emergency antenna for VHF which could be called a pocket J-pole. All that is needed is a 60" length of 300-ohm twin-lead, some 50-ohm coaxial cable, and a BNC or PL-259 connector.

First strip and solder the bottom end. Cut a 1/4" notch from one leg of the twin-lead using the table below to determine L1. Make all measurements as accurately as possible, but don't be overly concerned if they are not exact. Carefully cut out 1/2" of insulation around a distance L2 from the bottom and tin each wire. This cutout is so that the SWR can be adjusted by sliding the coax along the wire for the best match. Solder and wrap the connection with electrical tape or use shrink tube. Trim the total length to LT". Keep the coax cable a multiple of an electrical half-wavelength if possible (approx. 2.4 ft); either RG-58U or RG-174U can be used. Install the connector on the other end of the coax cable.

At the top end, place a small hole between the leads and attach a string. Add another string on the other end with a small sinker or washer as a weight.



Freq (MHz)	Total Length (LT) (inches)	Notch (L1) (inches)	Feed (L2) (inches)
144.00	56.94	17.36	1.12
146.00	56.16	17.12	1.10
148.88	55.41	16.89	1.09

KA7NKX